

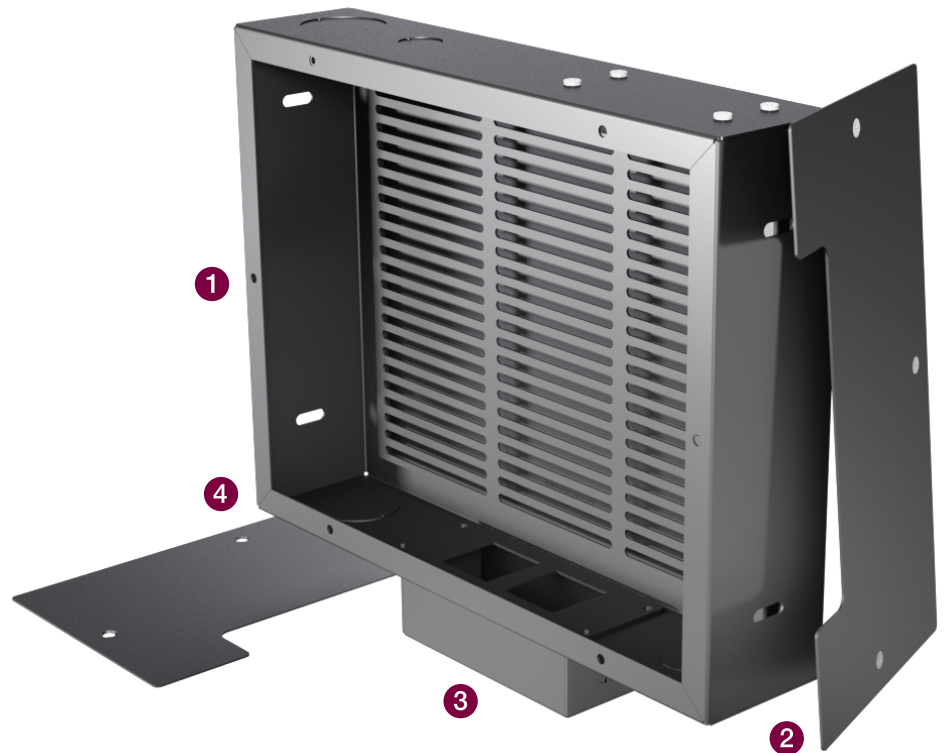
Weight Capacity: 15 lb | 6.8 kg

In Wall Box for AM95 Articulating Mount

Features

- 1 Conveniently stores AV system components while recessed into the wall
- 2 2 removable panels on the front allows access inside from one or both sides
- 3 Several knock outs and an electrical box with 2 universal power plugs
- 4 Speedy 1-person access for repairs and maintenance
- 5 Designed to be paired with the AM95 Articulating Mount

The INW-AM95 is a recessed gearbox made for the AM95 flat-panel articulating wall mount. The in-wall box allows for the storage of A/V equipment such as media players and other cable routing mechanics. The gearbox can be configured and accessed from it's front panel for easy maintenance and is a great partner for the AM95 solution.



In Wall Box for AM95 Articulating Mount

INW-AM95

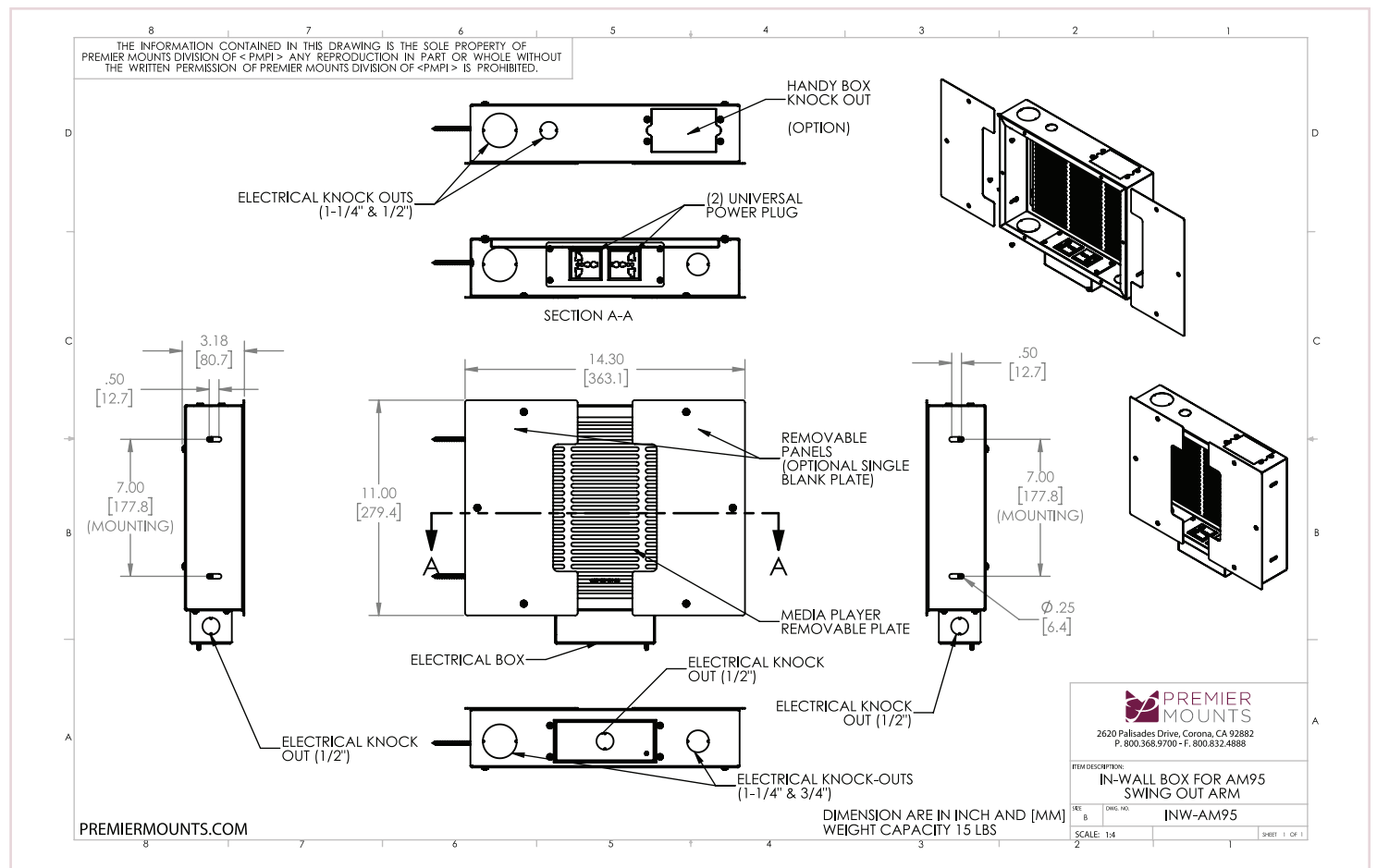
Specifications

| | | | |
|---|-----------------------|---|---------------------------------|
| Weight 10 lb. 4.54 kg | Color White | Weight Capacity / Mount 15 lb. 72.57 kg | Mounting Pattern NONE |
| Width x Height x Depth 14.3 in. x 11 in. x 3 in. 363.22 mm x 279.4 mm x 76.2 mm | | | Warranty Lifetime |

Packaging

| |
|---|
| Length x Width x Height 17" in x 14" in x 4.5" 431.8 mm x 355.6 mm x 114.3 mm |
|---|

Architectural Drawing



Specifications subject to change without notice

T: 800.368.9700 Int'l: +001.714.632.7100

